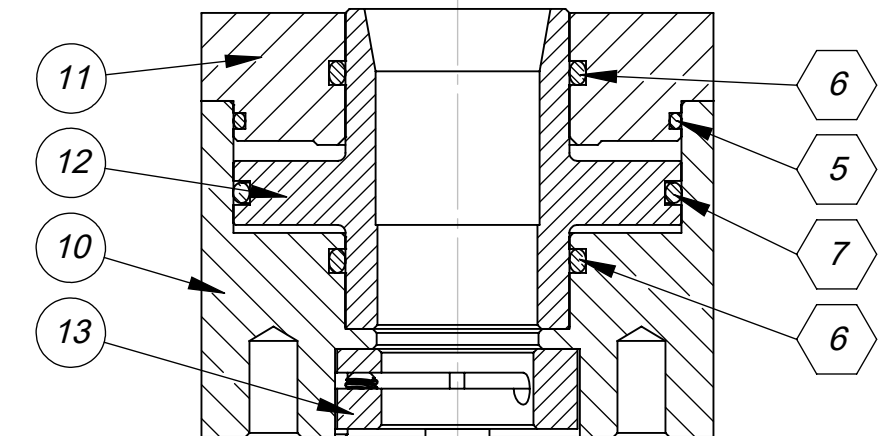
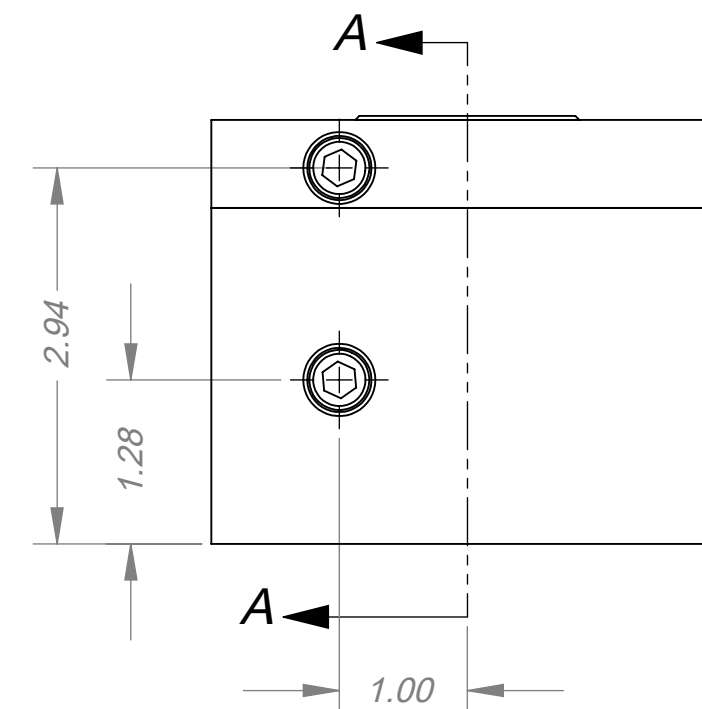
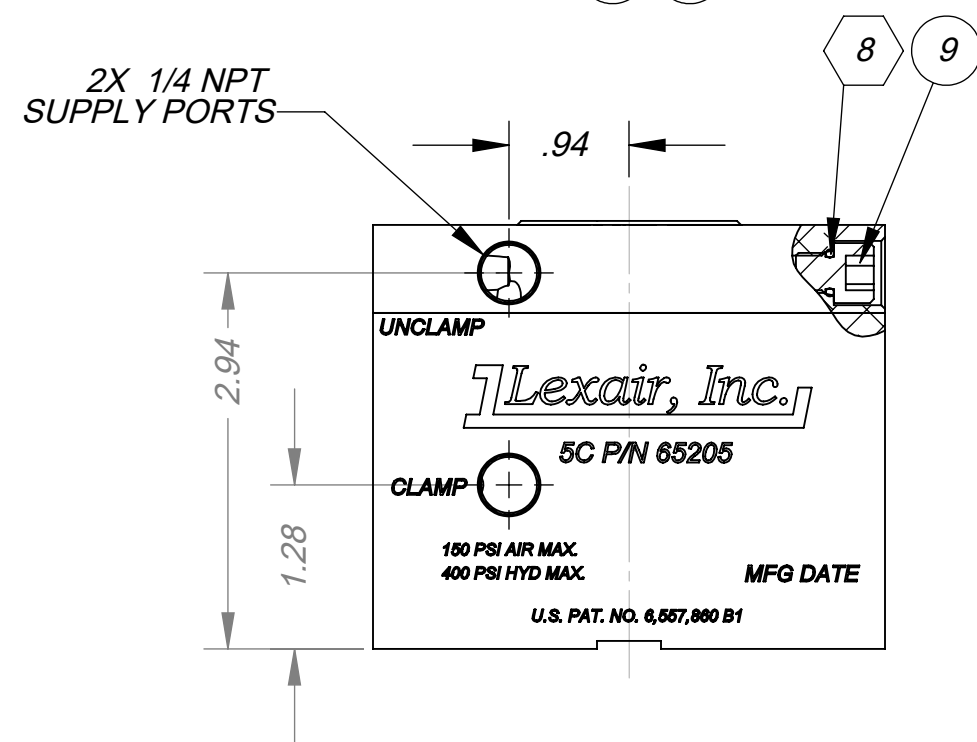
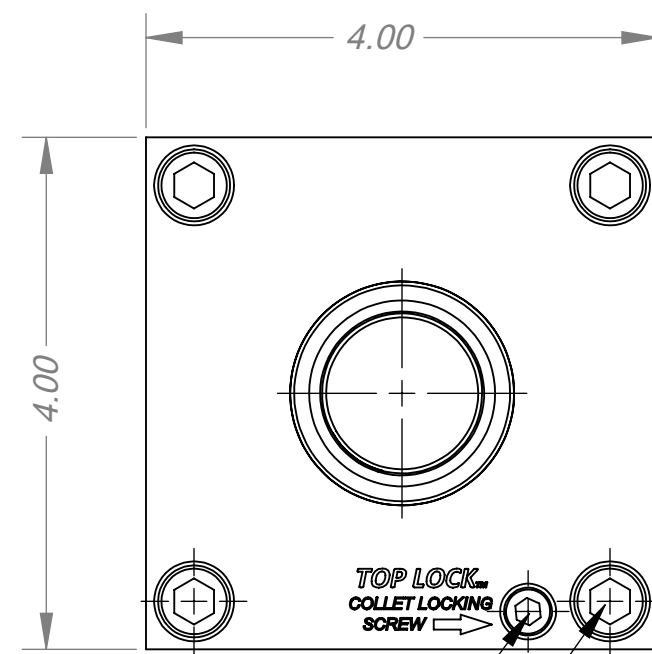


**C65205**

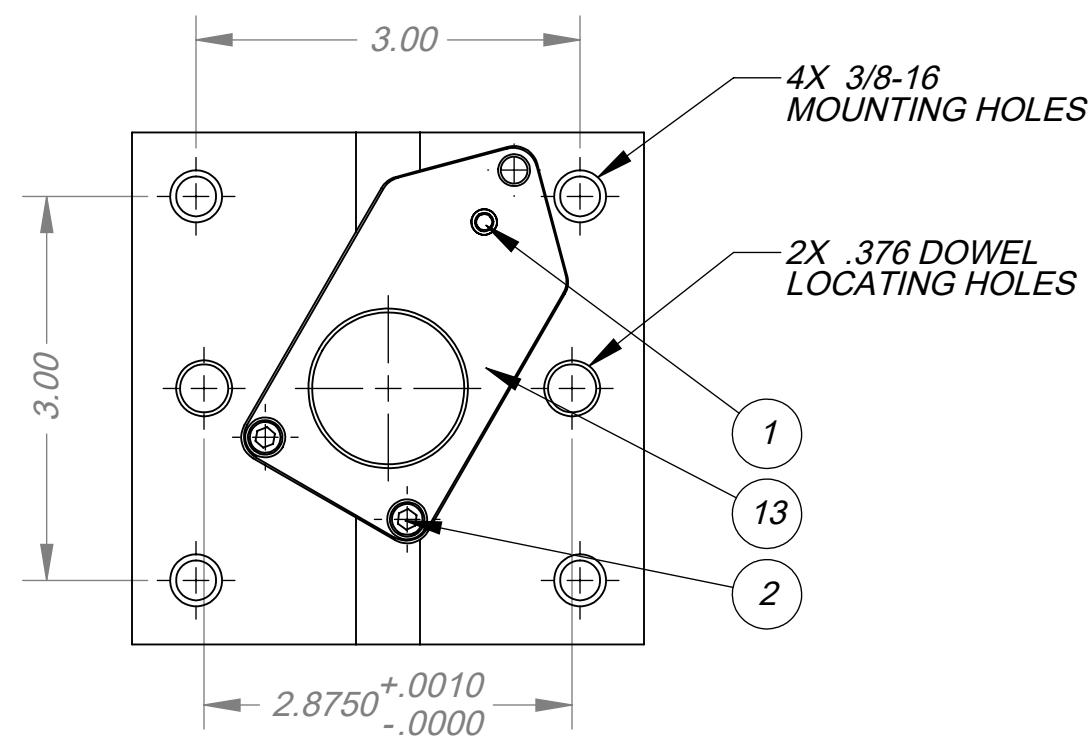
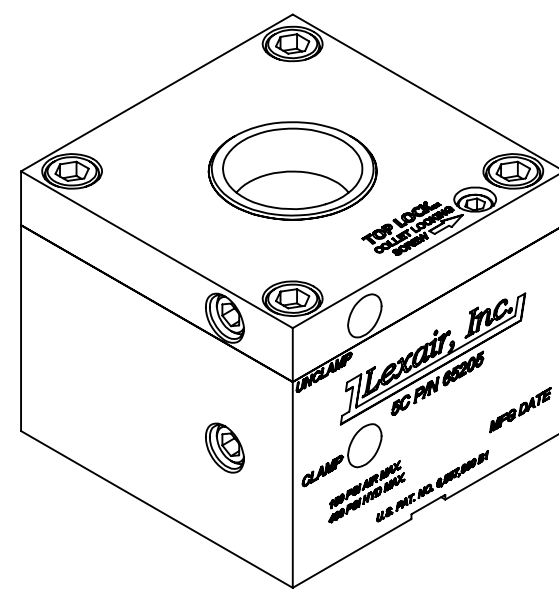
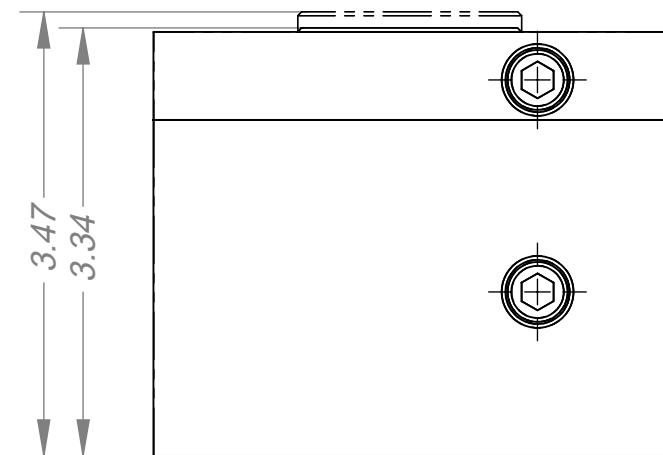
ITEM NO.	PART NUMBER	DESCRIPTION	QTY.
1	01-0094	SCREW, SHS, 1/4-20 X .375, BLOX	1
2	01-0245-1	SCREW, SHC, #8-32 X .875, BLOX, PATCH	2
3	01-2204	SCREW, SHC, ST, 3/8-16 X 1.00	4
4	01-2341	SCREW, SHC, 1/4-28 X 3.00	1
5	04-01-152	O-RING, BUNA, -152	1
6	04-01-224	O-RING, BUNA, -224	2
7	04-01-236	O-RING, BUNA, -236	1
8	04-01-902	O-RING, BUNA, -902	4
9	65-0065	PLUP, PRESSURE, CC	4
10	65-0241L	BODY, 5C	1
11	65-0242L	TOP, 5C, CC	1
12	65-0243	PISTON, 5C	1
13	65-0244	LOCK NUT, 5C	1



SECTION A-A

**NOTES:**

1. MAX PRESSURE 150 PSI AIR / 400 PSI HYD.
2. APPROXIMATE RADIAL CLAMPING FORCE 19.50 X PRESSURE.
3. ITEMS IN HEX BALLOONS ARE INCLUDED IN STD REPAIR KIT 65-0292.



THIS DOCUMENT AND ITS CONTENTS ARE THE PROPERTY OF LEXAIR, INC. THEY ARE FURNISHED TO YOU ON THE FOLLOWING CONDITIONS: NO RIGHT OR LICENSE IN RESPECT OF THIS DOCUMENT OR ITS CONTENTS, IS GIVEN OR WANTED IN SUPPLYING THIS DOCUMENT TO YOU. THIS DOCUMENT OR ITS CONTENTS ARE NOT TO BE USED OR TREATED IN ANY MANNER INCONSISTENT WITH THE RIGHTS OF LEXAIR, INC. OR TO ITS DETRIMENT AND ARE NOT TO BE COPIED, REPRODUCED, OR DISCLOSED OF, EXCEPT WITH ITS PRIOR WRITTEN CONSENT.

**REVISIONS**

<b>A</b>	REMOVED BOM ECL 15057
<b>B</b>	ECL-17022: REDUCED HYD MAX. TO 400 PSI
<b>C</b>	ECL-17047: ADDED TOP LOCK LOGO

ECL: 07008 01-24-07 MBR

Tolerances Unless Otherwise Specified:		
TYPE	FINISHED	AS CAST
DEC .00	± .015"	± .030"
DEC .000	± .005"	± .010"
FRACTIONAL	± 1/64"	± 1/32"
ANGLES °	± 1/2°	± 1°

FINISH 175 µ in.  
**COLLET CLOSER, 5C, ASS'Y.**  
 TOP LOCKING 5C COLLET CLOSER  
**Lexair, Inc.**  
 2025 Mercer RD, Lexington, Kentucky 40511

MATERIAL SPEC.	PC. NO.: 65205
PROCESS SPEC.	MADE FROM: SEE BOM
	MODEL FILE: 65205.SLDASM
	CAD FILE: 65205.slddrw
	<b>C 65205</b>
	SHEET NO. 1 of 1 SHEETS
	SCALE 1:1.5
	APPROX. WT. 6.034 LBS

DRAWN	CHECKED	APRVD.
MBR	MDL	TPO
01-24-07	01-24-07	01-24-07